

| | | | | |
|------------------|-------------------------|------------------------|----------------|---------------------|
| FULAN ELECTRONIC | | Document Number | Version | Secure lever |
| | | | | Confidential |
| Doc Name | SPARK7111 Upgrade Guide | | Date | 2010-10-25 |

SPARK7111 Upgrade Guide

Author Chris **Date:** 2010-10-25
Review: **Date:**
Approve: **Date:**

Category

| | |
|--|----|
| Category..... | 2 |
| 1 History..... | 3 |
| 2 Spark7111 Upgrade Guide- Uboot..... | 4 |
| 2.1 Functions Overview..... | 4 |
| 2.2 How to Upgrade Enigma2..... | 5 |
| 2.2.1 Upgrade Enigma2 by USB..... | 6 |
| 2.2.2 Upgrade Enigma2 by TFTP..... | 6 |
| 2.3 How to Upgrade Spark..... | 9 |
| 2.3.1 Upgrade Spark by USB..... | 10 |
| 2.3.2 Upgrade Spark by TFTP..... | 10 |
| 2.4 How to switch from Spark to Enigma2..... | 13 |
| 2.5 How to switch from Enigma2 to spark..... | 13 |
| 2.6 How to Upgrade Uboot by RS232..... | 13 |
| 3 Spark7111 Upgrade Guide- Application..... | 16 |
| 3.1 Functions Overview..... | 16 |
| 3.2 Upgrade Option [Dbase]..... | 17 |
| 3.3 Upgrade Option [App]..... | 17 |
| 3.4 Upgrade Option [App+Dbase]..... | 17 |
| 3.5 Upgrade Option [System]..... | 17 |
| 4 FAQ..... | 18 |

1 History

| Date | Version | Modification | Author |
|------------|---------|---|--------|
| 2010-10-25 | 1. 0 | Create Corresponds to SPARK7111 Software Version 1.1.** (etc: 1.1.16) | Chris |
| | | | |
| | | | |
| | | | |

2 Spark7111 Upgrade Guide- Uboot

Please be aware of following characters written in Red color.

2.1 Functions Overview

In SPARK7111 U-boot, we can:

- Upgrade entire Enigma2 system
- Upgrade entire Spark system
- Upgrade U-boot itself by RS232
- switch default booting system between SPARK and Enigma2

Front panel functions Overview:

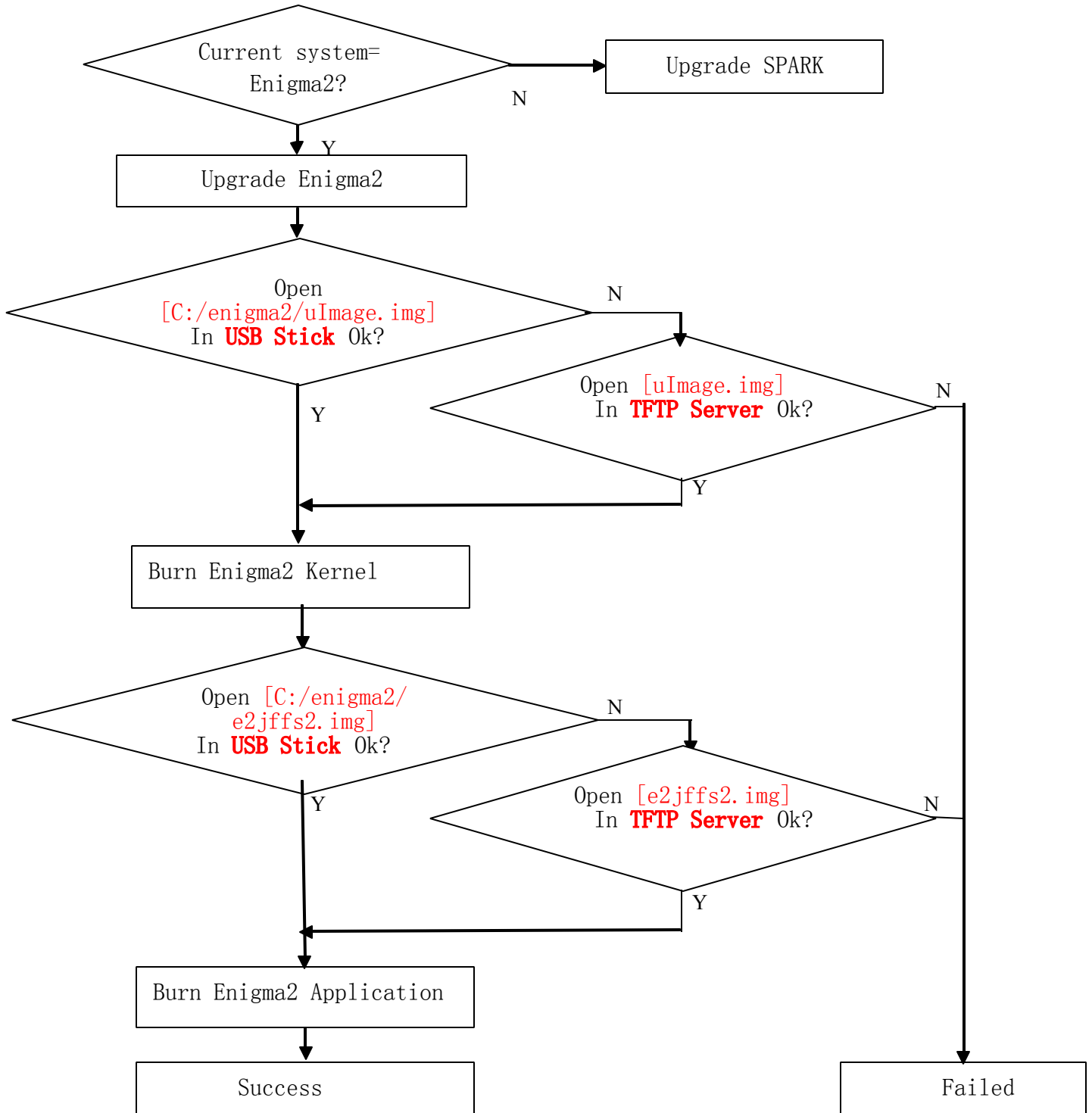
| Key Combination | Function |
|------------------------------------|---------------------------------------|
| [OK] (press 5 sec) + [Down] + [OK] | Select engma2 as current system |
| [OK] (press 5 sec) + [Up] + [OK] | Select Spark as current system |
| [OK] (press 5 sec) + [Right] | Upgrade Current system By USB or TFTP |
| [OK] (press 5 sec) + [Left] | Upgrade U-boot By RS232 |

Upgrade Overview:

| host | target | Protocol/Way | Auto/Manual | Upgrade time | How to |
|----------------|---------|--------------|-------------|--------------|----------------|
| SPARK Uboot | Uboot | RS232 | Manual | 1.5 min | By front panel |
| | Enigma2 | USB | Manual | 2 min | By front panel |
| | | TFTP.. | Manual | 2 min | By front panel |
| | Spark | USB | Manual | 4 min | By front panel |
| | | TFTP.. | Manual | 4 min | By front panel |

2.2 How to Upgrade Enigma2

Upgrade Enigma2 flow:



2.2.1 Upgrade Enigma2 by USB

Preparation:

1. We only recommend Kingston USB stick, we don't support USB hard disk
2. Please make sure your USB stick only have 1 partition and the file system is FAT32
3. Set default booting system to [enigma2].

Upgrade Step:

1. Make sure [C:/engima2] is exist, if not, please create this folder.
 2. copy [uImage] and [e2jffs2.img] to [C:/engima2]
 3. Connect USB stick to STB
 4. Keep Pressing [OK] Button in Front Panel, then power on STB.
 5. After 5 seconds, you will see [Forc] in LED, release [OK] button and press [Right] Button.
 6. if everything OK, You will see [U LD] shining in LED
 7. if upgrade success, You will see [SUCC] and STB reboot automatically
- If upgrade not finishes in 5 minutes, then there must be something wrong, please check your configuration and re-try.

2.2.2 Upgrade Enigma2 by TFTP

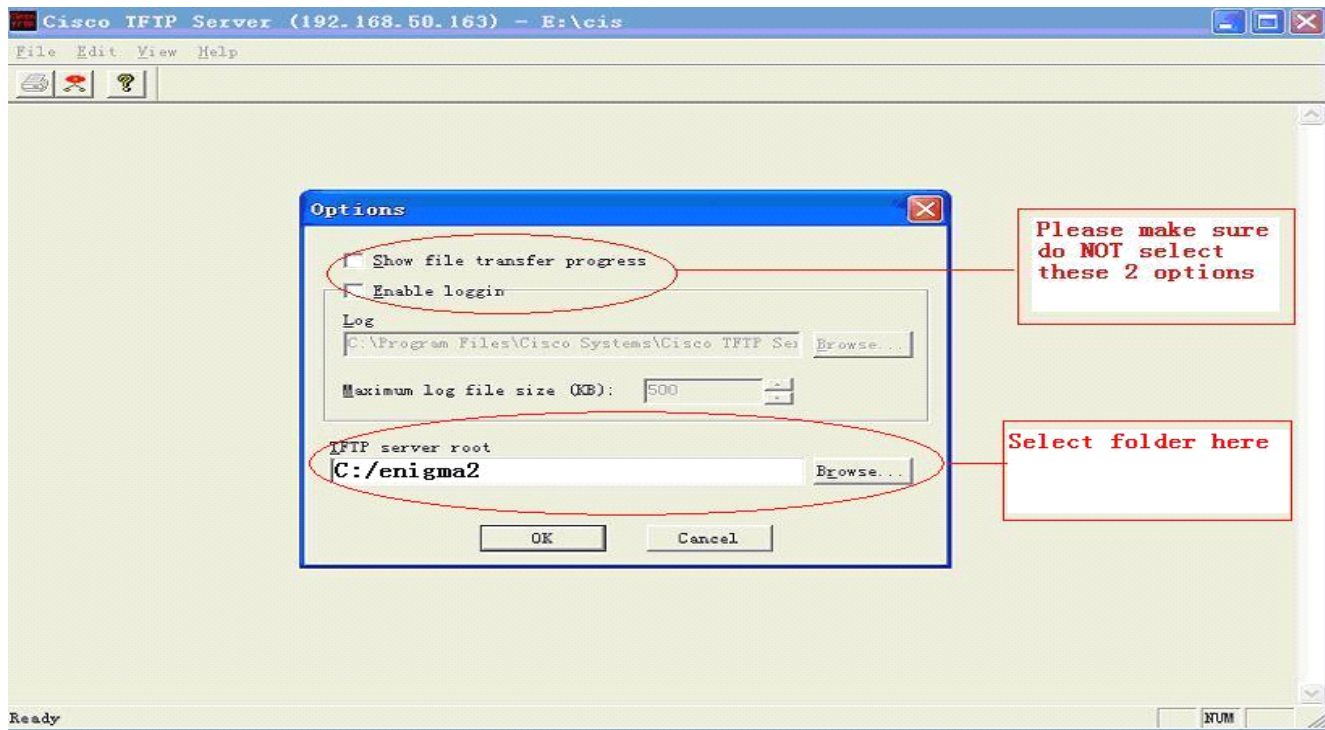
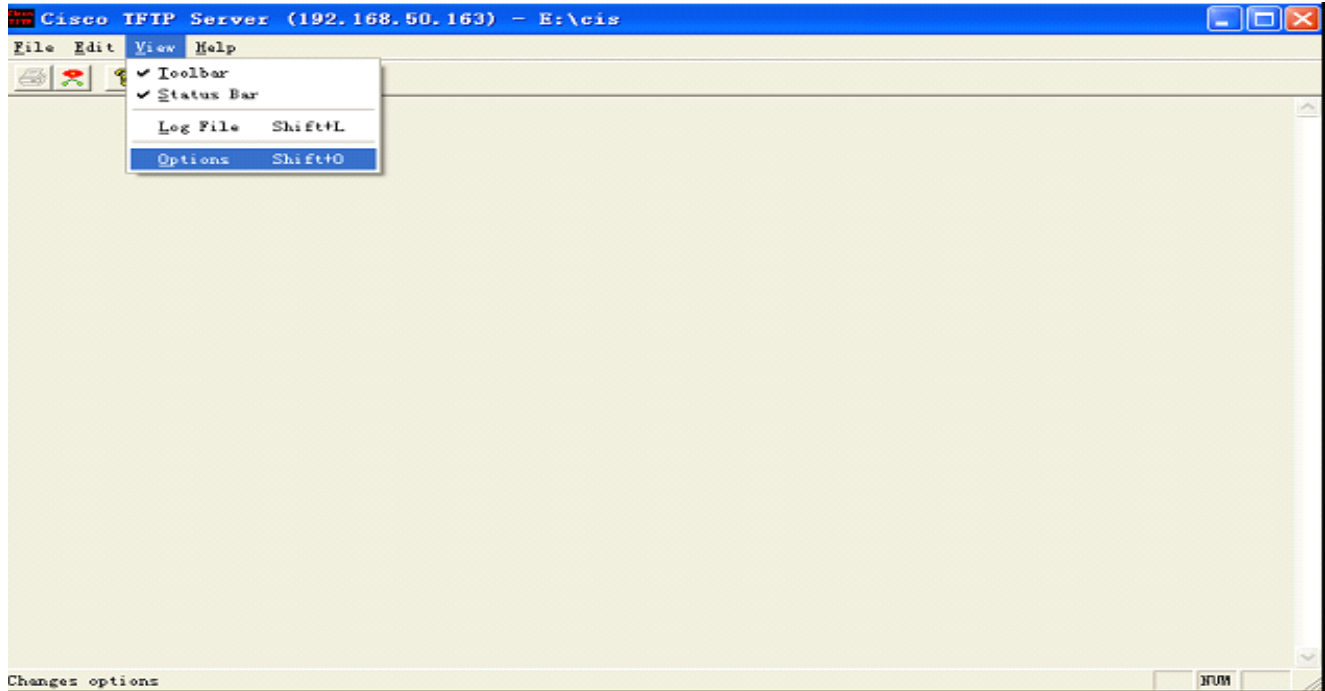
Since we have some restrictions and can not support all kinds of USB stick, we provide another option (TFTP) to upgrade Enigma2.

Preparation:

1. Install TFTP tools [csicotftpl1.rar] to your PC
2. Set your PC IP addr to [192.168.40.19]
3. connect your PC to STB by LAN, now we only support LAN, do not support WLAN
4. Set default booting system to [enigma2]

Upgrade Step:

1. copy [uImage] and [e2jffs2.img] to any folder of your PC, for example [C:/engima2]
2. select folder in TFTP tools:



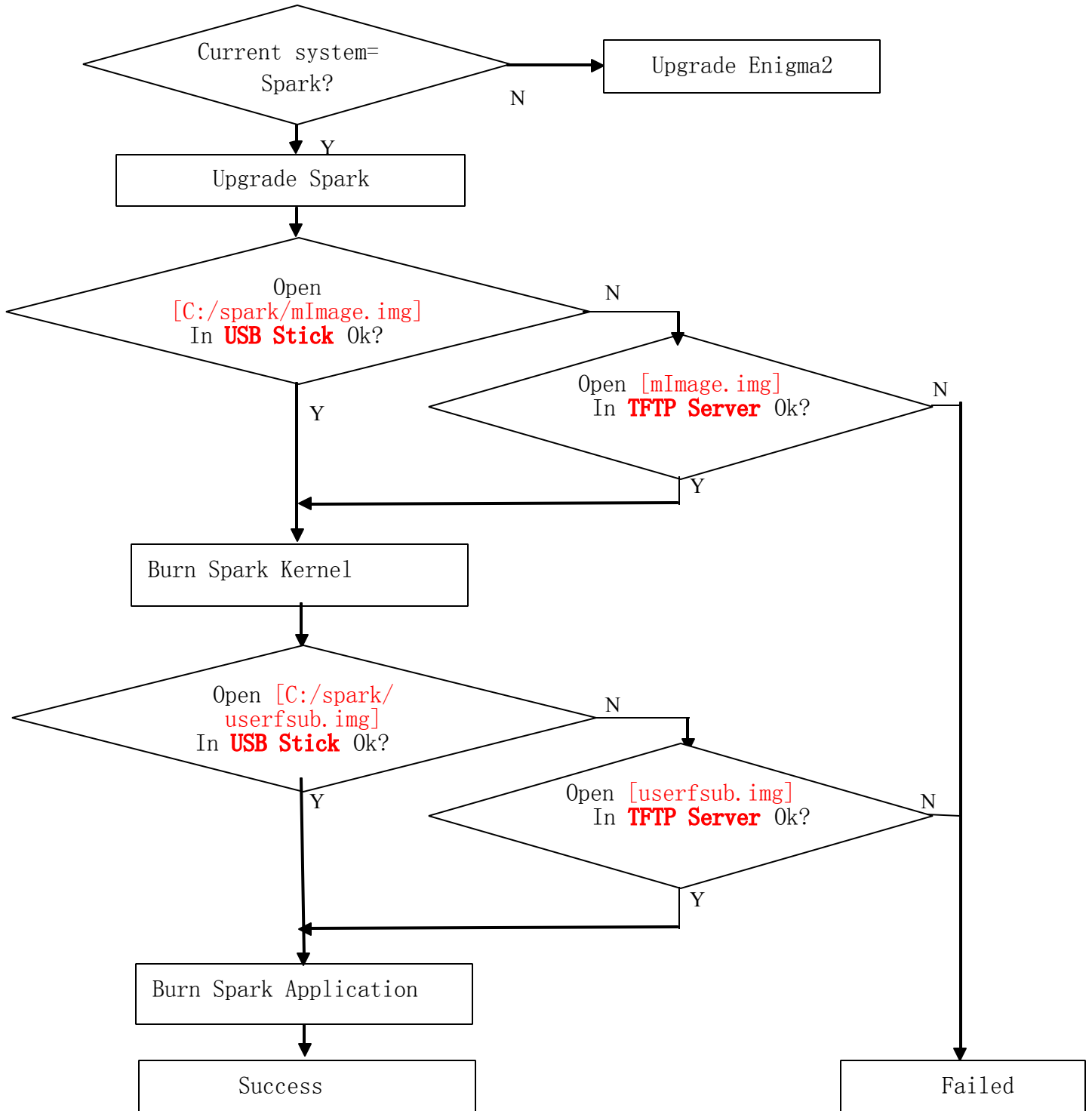
3. Keep Pressing [OK] Button in Front Panel, then power on STB.
4. After 5 seconds you will see [Forc] in LED, release [OK] button and press [Right] Button.
5. if everything OK, You will see [T LD] shining in LED and you will see some debug information in TFTP Server, like

```
“ Mon Oct 25 14:02:36 2010: Sending 'uImage' file to 192.168.40.19 in binary mode  
Mon Oct 25 14:02:39 2010: Successful.  
Mon Oct 25 14:02:50 2010: Sending 'e2jffs2.img' file to 192.168.40.19 in binary  
mode  
Mon Oct 25 14:03:33 2010: Successful.”
```

6. if upgrade success, You will see [SUCC] and STB reboot automatically
If upgrade not finishes in 5 minutes, then there must be something wrong, please check your configuration and re-try.

2.3 How to Upgrade Spark

Upgrade Spark flow:



2.3.1 Upgrade Spark by USB

Preparation:

1. We only recommend Kingston USB stick, we don't support USB hard disk
2. Please make sure your USB stick only have 1 partition and the file system is FAT32
3. Set default booting system to [spark].

Upgrade Step:

1. Make sure [C:/spark] is exist, if not, please create this folder.
2. copy [mImage] and [userfsub.img] to [C:/spark]
3. Connect USB stick to STB
4. Keep Pressing [OK] Button in Front Panel, then power on STB.
5. After 5 seconds, you will see [Forc] in LED, release [OK] button and press [Right] Button.
6. if everything OK, You will see [U LD] shining in LED
7. if upgrade success, You will see [SUCC] and STB reboot automatically
8. If upgrade not finishes in 5 minutes, then there must be something wrong, please check your configuration and re-try.

2.3.2 Upgrade Spark by TFTP

Since we have some restrictions and can not support all kinds of USB stick, we provide another option (TFTP) to upgrade Enigma2/Spark.

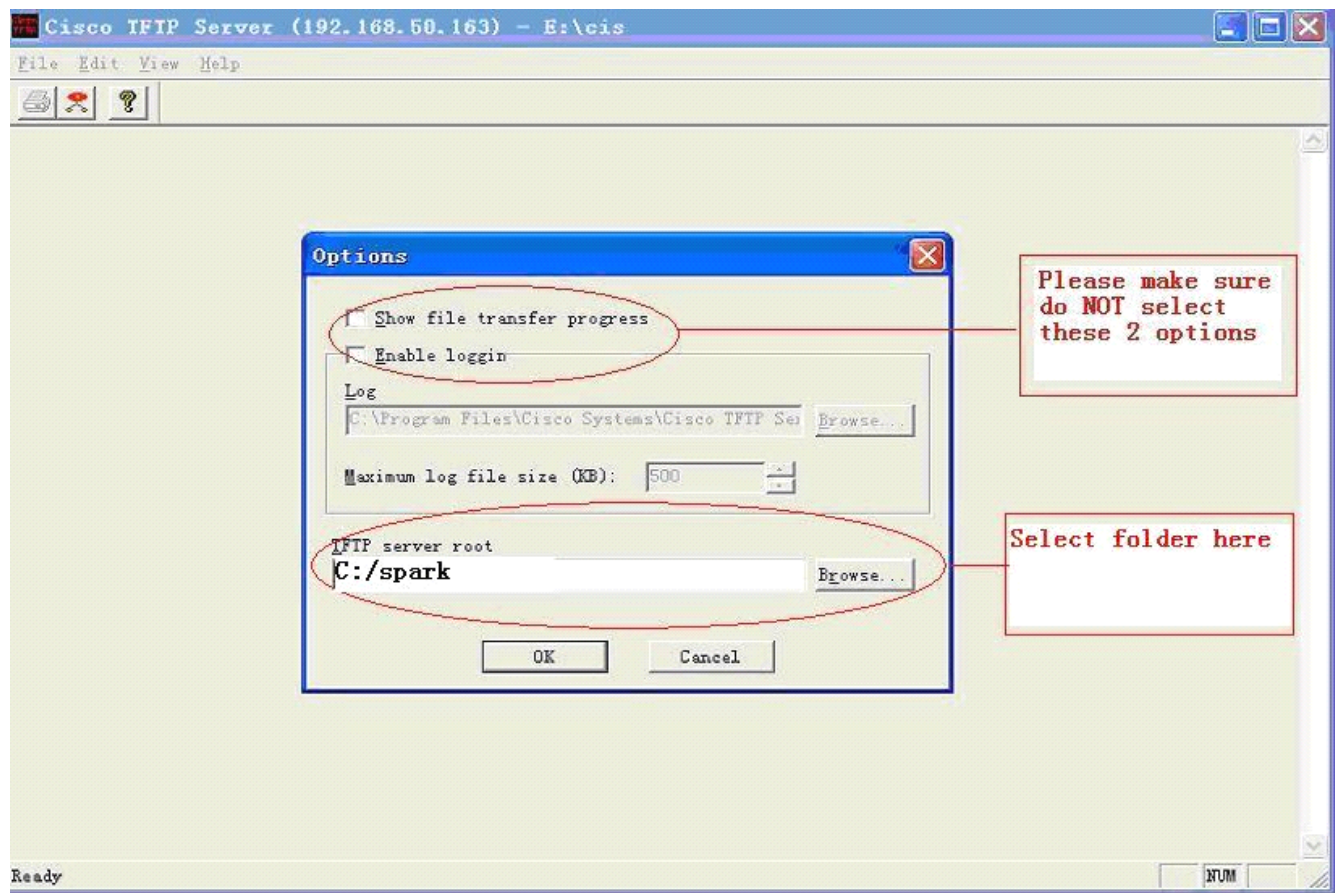
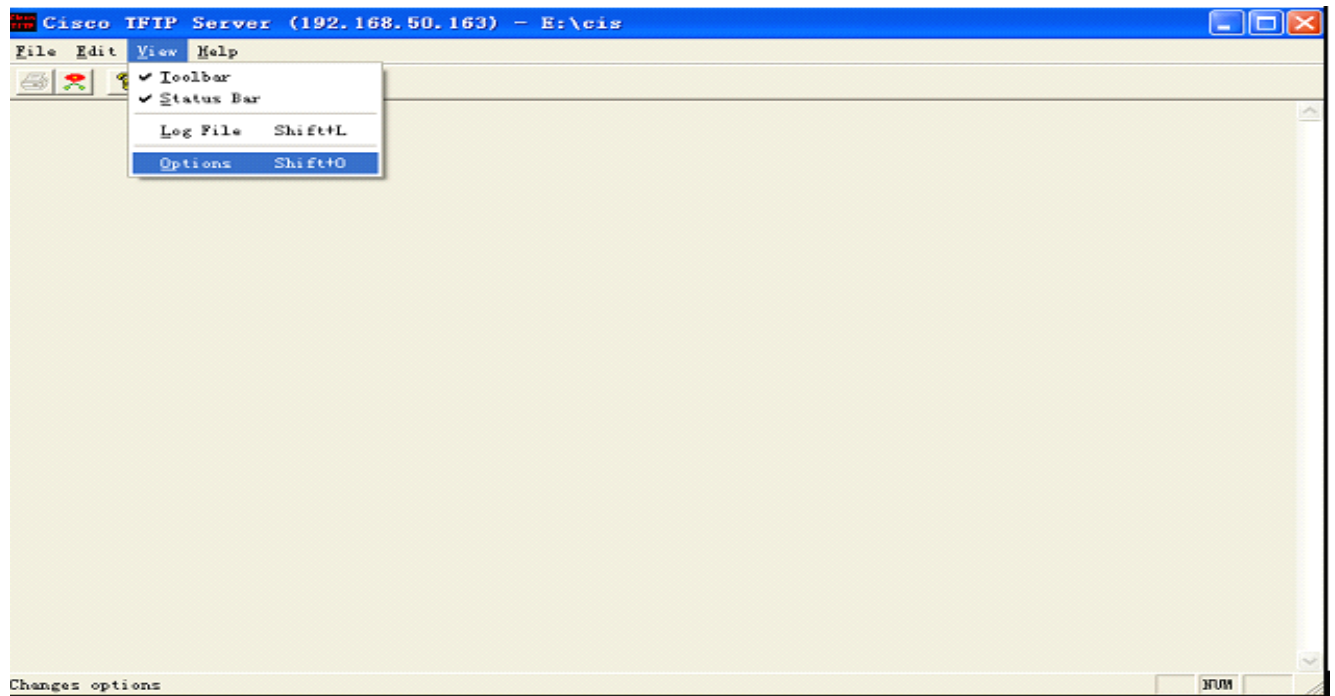
Preparation:

1. Install TFTP tools [csicotftpl1.rar] to your PC
2. Set your PC IP addr to [192.168.40.19]
3. connect your PC to STB by LAN, now we only support LAN, do not support WLAN
4. Set default booting system to [spark]

Upgrade Step:

1. copy [mImage] and [userfsub.img] to any folder of your PC, for example [C:/spark]

2. select folder in TFTP tools:



3. Keep Pressing [OK] Button in Front Panel, then power on STB.
4. After 5 seconds you will see [Forc] in LED, release [OK] button and press [Right] Button.
5. if everything OK, You will see [T LD] shining in LED and you will see some debug information in TFTP Server, like

```
“ Mon Oct 25 14:02:36 2010: Sending 'mImage' file to 192.168.40.19 in binary mode  
Mon Oct 25 14:02:39 2010: Successful.  
Mon Oct 25 14:02:50 2010: Sending 'userfsub.img' file to 192.168.40.19 in binary  
mode  
Mon Oct 25 14:03:33 2010: Successful.”
```

6. if upgrade success, You will see [SUCC] and STB reboot automatically
If upgrade not finishes in 5 minutes, then there must be something wrong, please check your configuration and re-try.

2.4 How to switch from Spark to Enigma2

1. Keep Pressing [OK] Button in Front Panel, then power on STB.
2. After 5 seconds, you will see [Forc] in LED, release [OK] button and Press [Down] button you will see [EN16] in LED
3. Press [OK] to confirm your selection, STB will reboot automatically

2.5 How to switch from Enigma2 to spark

1. Keep Pressing [OK] Button in Front Panel, then power on STB.
2. After 5 seconds, you will see [Forc] in LED, release [OK] button and Press [UP] button you will see [SPAR] in LED
3. Press [OK] to confirm your selection, STB will reboot automatically

2.6 How to Upgrade Uboot by RS232

Preparation:

1. Open [HyperTerminal] and set default parameters

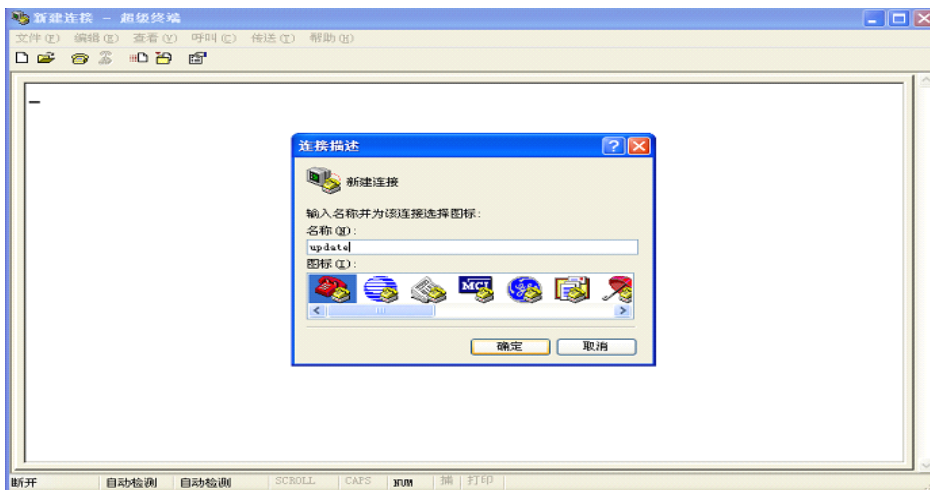
Symbol rate: [1152000]

Data bits: [8]

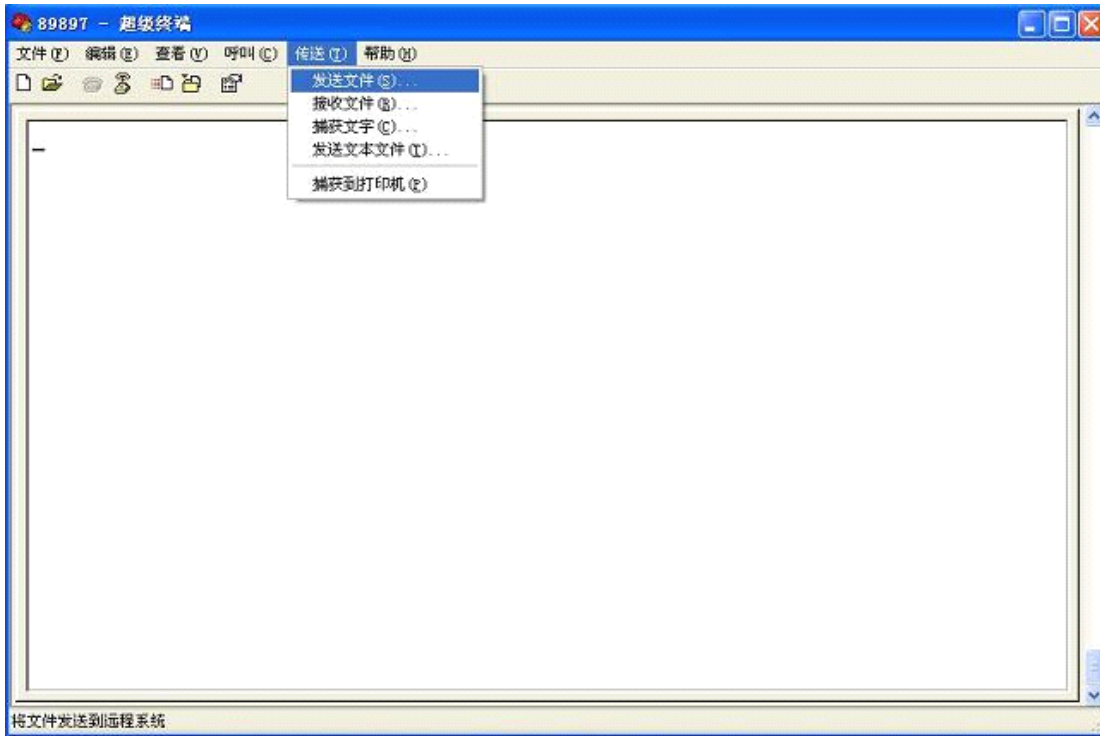
Parity: [None]

Stop Bits: [1]

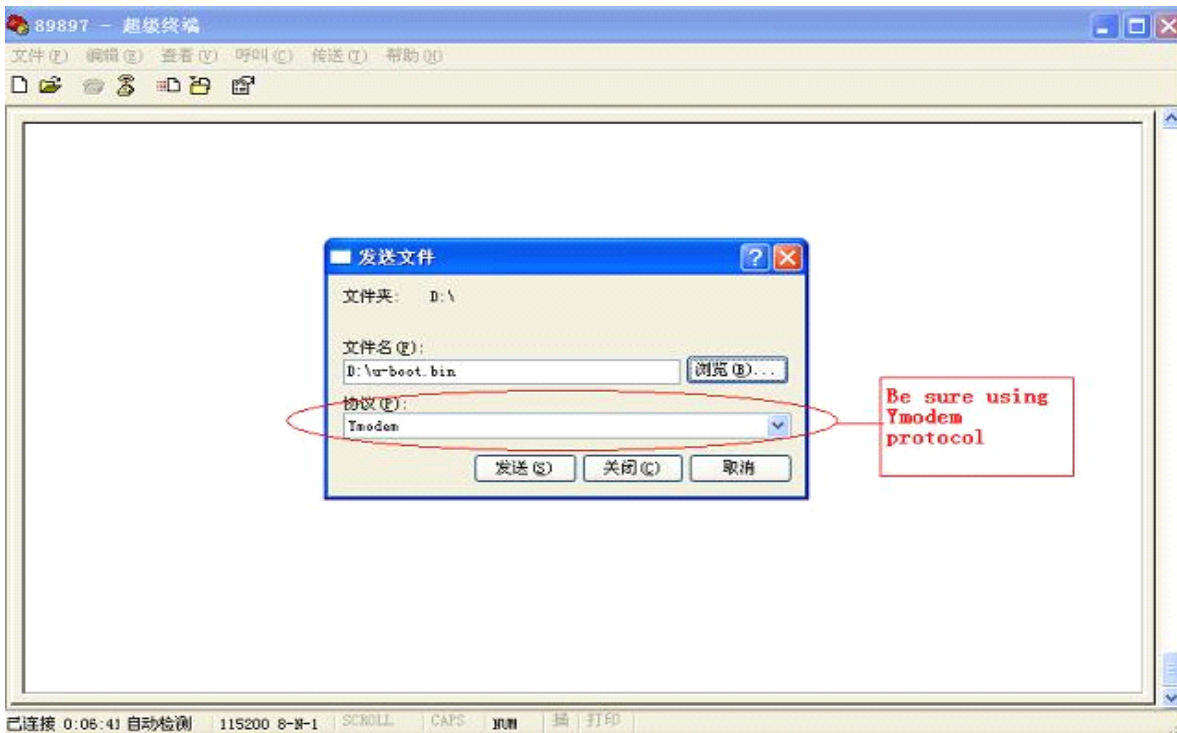
Data Flow Control: [None]

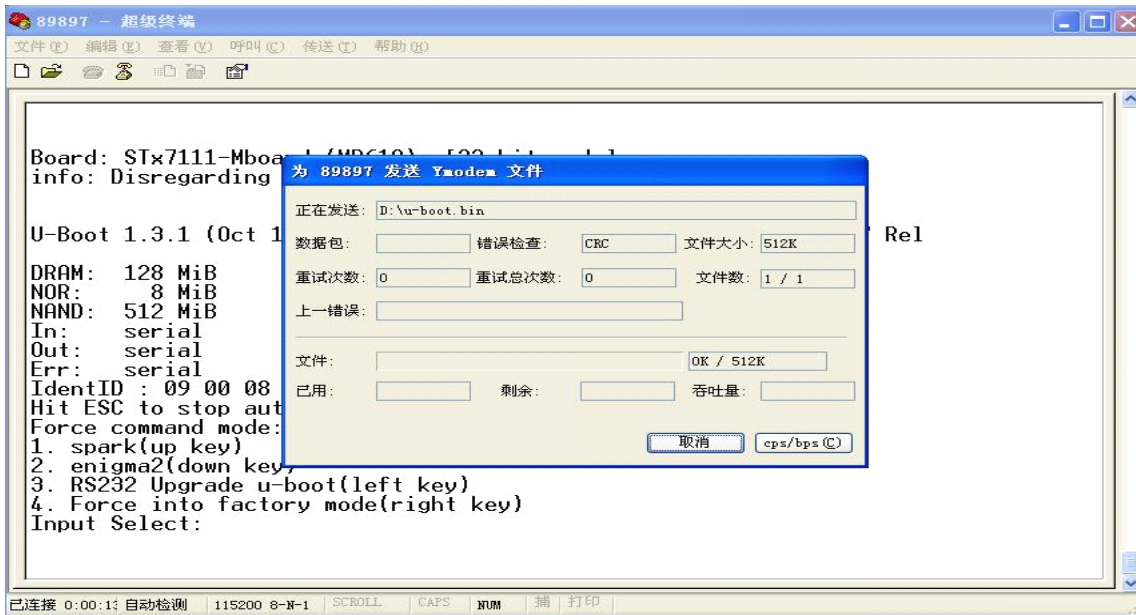


2. Select [Transfer/File Transfer] Option



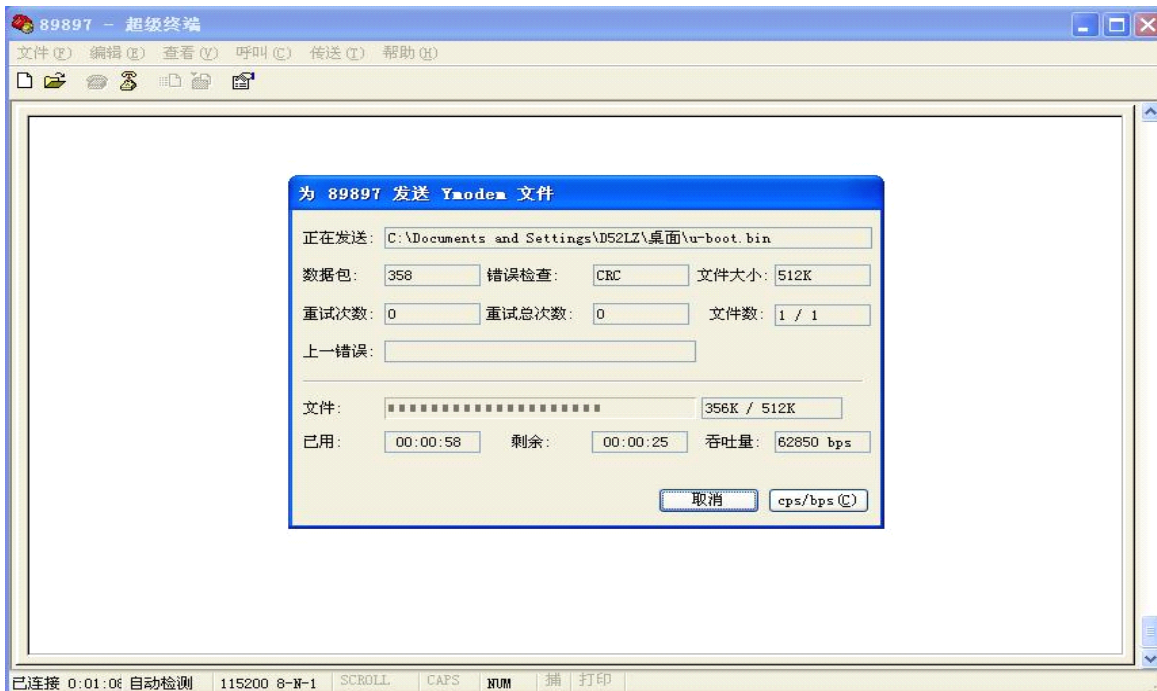
3. Select [u-boot.bin] and use [Ymodem] Option, send file





Upgrade Step:

1. Keep Pressing [OK] Button in Front Panel, then power on STB.
2. After 5 seconds you will see [Forc] in LED, release [OK] button and press [Left] Button.
3. If everything is ok, in STB you will see [LOAD] shinning in LED. In HyperTerminal, you will see:



3 Spark7111 Upgrade Guide- Application

3.1 Functions Overview

In SPARK7111 Application, we can:

- Upgrade Spark Dbase, System can recover if power down
- Upgrade Spark Application, System can recover if power down
- Upgrade Spark Application+Dbase, System can recover if power down
- Upgrade Spark whole system (hidden), System can NOT recover if power down

Upgrade Overview:

| host | modules | Protocol/Way | Auto/Manual | Upgrade time | How to |
|-------------------|-----------|--------------|-------------|---------------------------|--|
| Spark Application | App | USB | Manual | 2 min | By Menu |
| | | USB | Auto | 2 min | Auto detect C:/spark |
| | | SPARKONLINE | Auto | Depends on internet speed | Auto detect new version in spark online server |
| | Dbase | USB | Manual | 1 min | By Menu |
| | | SPARKONLINE | Manual | Depends on internet speed | By Menu |
| | App+Dbase | USB | Manual | 2 min | By Menu |
| | system | USB | Manual | 4 min | By hidden Menu |

3.2 Upgrade Option [Dbase]

Upgrade [Dbase] Option only includes channel list, Tp list, Satellite List.

Do not include User Preference Data (STB IP, default language etc)

Upgrade Step:

3.3 Upgrade Option [App]

Upgrade [App] Option only includes Application code. Do not include Dbase or User preference data.

Upgrade Step:

3.4 Upgrade Option [App+Dbase]

Upgrade [App+Dbase] Option only includes Application code, Dbase and User preference data.

Upgrade Step:

3.5 Upgrade Option [System]

Upgrade [System] Option includes all spark system as well as uboot.

Upgrade Step:

1. Enter into Upgrade menu
2. Select Upgrade package
3. Press [EPG], [5], [2], [1], [0] to activate upgrade.

Capture place here

4 FAQ